

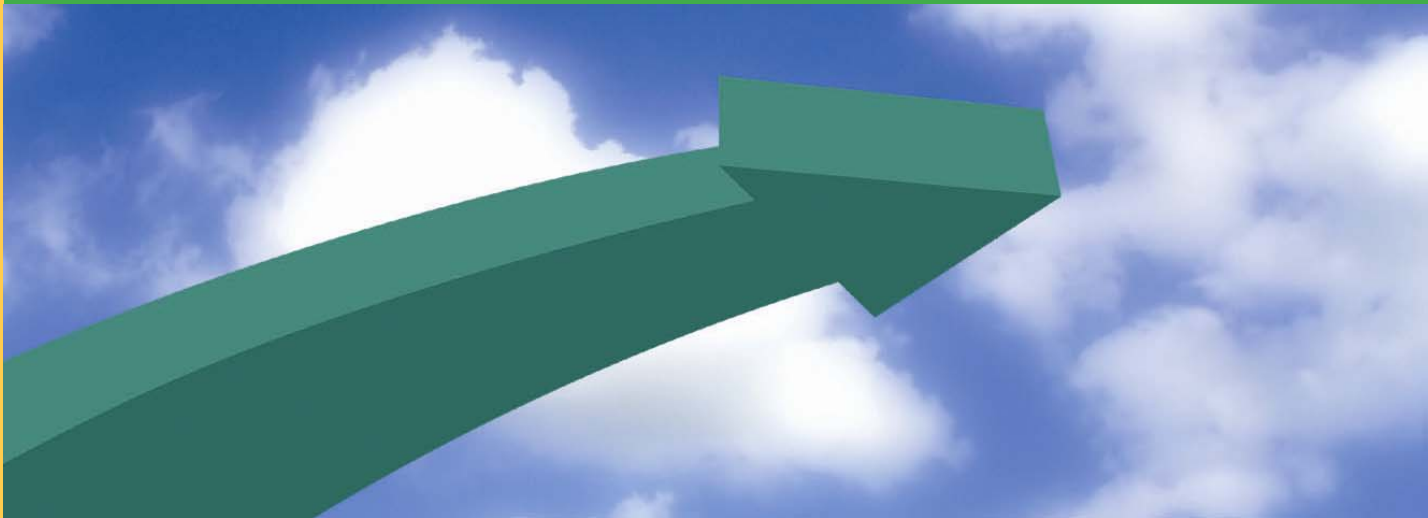
**Stakeholder Alignment
at Complex
Remediation Projects**

**Project Strategy and
Planning Services**

**Design and Construction
Oversight**

**Risk Management
and Remediation**

**Technically Rigorous
Visualizations**



Stakeholders > Vision > Creativity > Solutions > Success

Project Navigator, Ltd.



Project Navigator, Ltd. (PNL) is an environmental knowledge, risk and resource management company. Our project managers, engineers and scientists have developed a strong track record for creative problem solving.

Our core competence is environmental engineering and remediation, and our primary service is controlling the strategic direction of demanding projects. We have demonstrated these capabilities at major Superfund projects. Project Navigator has had lead project management responsibilities at more than ten major Superfund sites, where project costs have cumulatively exceeded \$200MM.

Project Navigator first helps our clients with planning and logistics, and then assists with successful design and remediation phases. We provide scoping, bidding and procurement services to insure that our client retains the appropriate control and project resources.

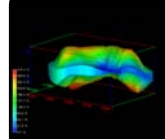
We have a culture of leveraging the use of data and information and, negotiating cost effective solutions with regulatory entities. Project Navigator has a strong track record of working with project stakeholders to develop creative solutions, which ultimately save our clients money. We have been introduced to projects from their inception or brought in at a mid-point to elevate performance.

Services

Complex Site Project & Risk Management



Landfill Closure and O&M Experience



Project Cost and Schedule Controls



Strategic Planning



Brownfields & Redevelopment



Regulatory Negotiations



Contracting Strategy



Consultant/Contractor Oversight



Relationship Management



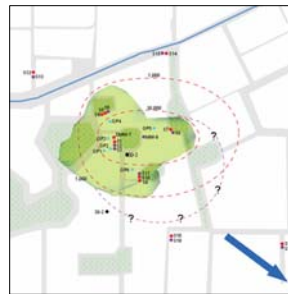
Relevant Experience



*Ascon Landfill Site
Huntington Beach, California*



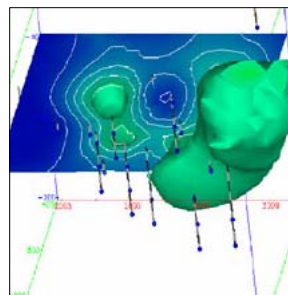
*Waste Disposal, Inc. Site
Santa Fe Springs, California*



*Hendry County Site
Florida*



*Operating Industries, Inc. Site
Monterey Park, California*



*MAR Services
Cankton, Louisiana*



*Tex Tin Superfund Site
Texas City, Texas*



*PAB Oil & Chemical Service, Inc.
Abbeville, Louisiana*



*Malone Superfund Site
Texas City, Texas*

Project Navigator's Key Strengths



We have vast experience in the coordination of remediation projects while simultaneously maintaining our clients' relationships with EPA and the local regulatory bodies.

Our Project Coordination capabilities include:

- Excellent negotiators/advocates with regulatory agencies and the public
- "Best-in-class", strategic-thinking, environmental personnel
- Creative problem solvers
- Experts in data assessment and interpretation
- GIS and data analysis
- Quick problem solvers via generation of conceptual remediation designs
- Highly adept at risk management
- Ability to handle and distill large amounts of technical data
- Experts at providing clients with a range of strategic options
- Project scoping and bidding services
- Value engineering and design
- Use of web-enabled project management at www.projecttoolbox.com for decision-making facilitation
- High level of experience at major Superfund and RCRA sites
- Experience in Brownfields and Redevelopment

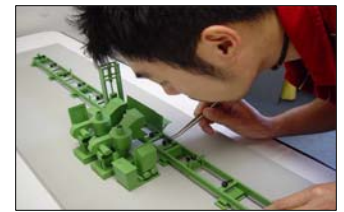
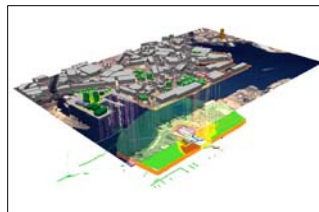
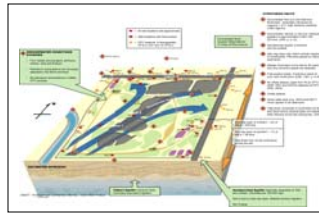
Operating Mantras

We work hard to understand the internal culture and business objectives of our clients, so we can act not only as technical advisors on your projects, but also perform as advocates for remediation philosophies such as risk-based closure approaches.

We see our mission as one of helping the client devise a plan, then during the execution of that plan, controlling its costs, scope creep, schedule and execution risks.

Our company is small enough to provide dedicated project management services, yet deep enough to allocate additional highly trained personnel at critical junctures.

Visual Navigator, Ltd.



Visual Navigator, Ltd. (VNL) is a sister company of PNL. Both companies are strong advocates of visualizing projects. We believe that stakeholders can make better and faster decisions if they can clearly visualize the project pathway.

Frequently, we work on complex projects that generate large amounts of data and information. Utilizing the 80/20 rule, our team determines what information is essential for success and then visualizes it. Subsequently, the data can be more quickly and easily understood. VNL is a blend of graphic design and scientific and engineering personnel that accurately facilitates the decision making process in order to advance the project.

Visual methods are effective in contributing to overall 'big picture' thinking. Additionally, project visualizations facilitate stakeholder alignment and lead to a heightened awareness of project goals at all levels in the project team.

VNL services include:

- Site conceptual models
- GIS-EVS analysis
- Project technical explanation graphics
- 3D information visualizations
- Storyboarding the project sequence
- Scale models
- Digital animation
- Litigation support graphics
- Aerial photography analysis

PNL's Approach

Our problem solving approach involves close coordination and interaction with our client. Early project scoping meetings are held where the client's objectives are determined. Project Navigator's approach involves leveraging the use of existing site data to produce forward-looking plans. We operate with a strong internal philosophy of only collecting the appropriate amount of data, since often, environmental remediation projects are overstudied prior to remediation. Our "data mining" can lead to the development of focused bid packages and better contracting strategies.



www.projectnavigator.com

West Coast

LOS ANGELES, CA

One Pointe Drive
Suite 320
Brea, CA 92821
tel 714.388.1800
fax 714.388.1839

SAN FRANCISCO, CA

2300 Contra Costa Boulevard
Suite 520
Pleasant Hill, CA 94523
tel 925.969.9574
fax 925.969.9558



www.pnl-a.com

East Coast

PHILADELPHIA, PA - HQ

7 Great Valley Parkway
Suite 214
Malvern, Pennsylvania 19355
tel 610.251.6851
fax 610.903.4287

BOSTON, MA

194 Forbes Road
Braintree, MA 02184-2617

BRANCHBURG, NJ

35 Columbia Road
Branchburg, NJ 08876

Gulf Coast

HOUSTON, TX

10497 Town and Country Way
Suite 830
Houston, TX 77024
tel 713.468.5004
fax 713.468.4515

CHICAGO, IL

630 Tollgate Road, Suite D
Elgin, IL 60123-9364

TALLAHASSEE, FL

3382 Capital Circle N.E.
Tallahassee, FL 32308-1568

SAN JUAN, PR

349 Mendez Vigo
RHC Building, Suite 3A
Dorado, PR 00646

*Additional support offices are in
the Midwest and East Coast.

Services

Superfund Site Project
Management and Project
Coordination

Staffing of Consent Decree
Project Coordinator Function

Multi-party Site Management

RCRA Sites

Strategy and Planning at
Complex Project Sites

Regulatory Negotiations

Risk Based Closures

Cost and Schedule Controls

Site Assessments

Bidding, RFPs, and Resource
Selection

Design and Construction
Oversight

Groundwater Planning and
Management

Landfill Remediation

Health and Safety

Community Relations

Brownfields and Redevelopment
(Land Reuse Planning)

Litigation Support and Expert
Witness

Web-Enabled Project
Management

Data and Information
Management

Visualizations: GIS Analysis and
3D Graphics

Site Conceptual Models

Websites

PROJECTNAVIGATOR.COM

Delivers management solutions at
complex environmental remediation
projects on the West and Gulf Coasts.

PNL-A.COM

Delivers management solutions at
complex environmental remediation
projects on the East Coast.

PROJECTTOOLBOX.COM

A secure online project management tool.

VISUALIZATIONNAVIGATOR.COM

Provides technically rigorous visuals,
graphics and animations.

GREENSTRUCTURE.COM

Designs environmentally-conscious
building spaces.

WEMOVEPROPERTY.COM

Finds undervalued land tracts and assists
in the land conveyance process.

BROWNFIELDSNAVIGATOR.COM

Website that promotes marketing,
business development and synergies in
the Brownfields marketplace.